

State of Wyoming Corner Record

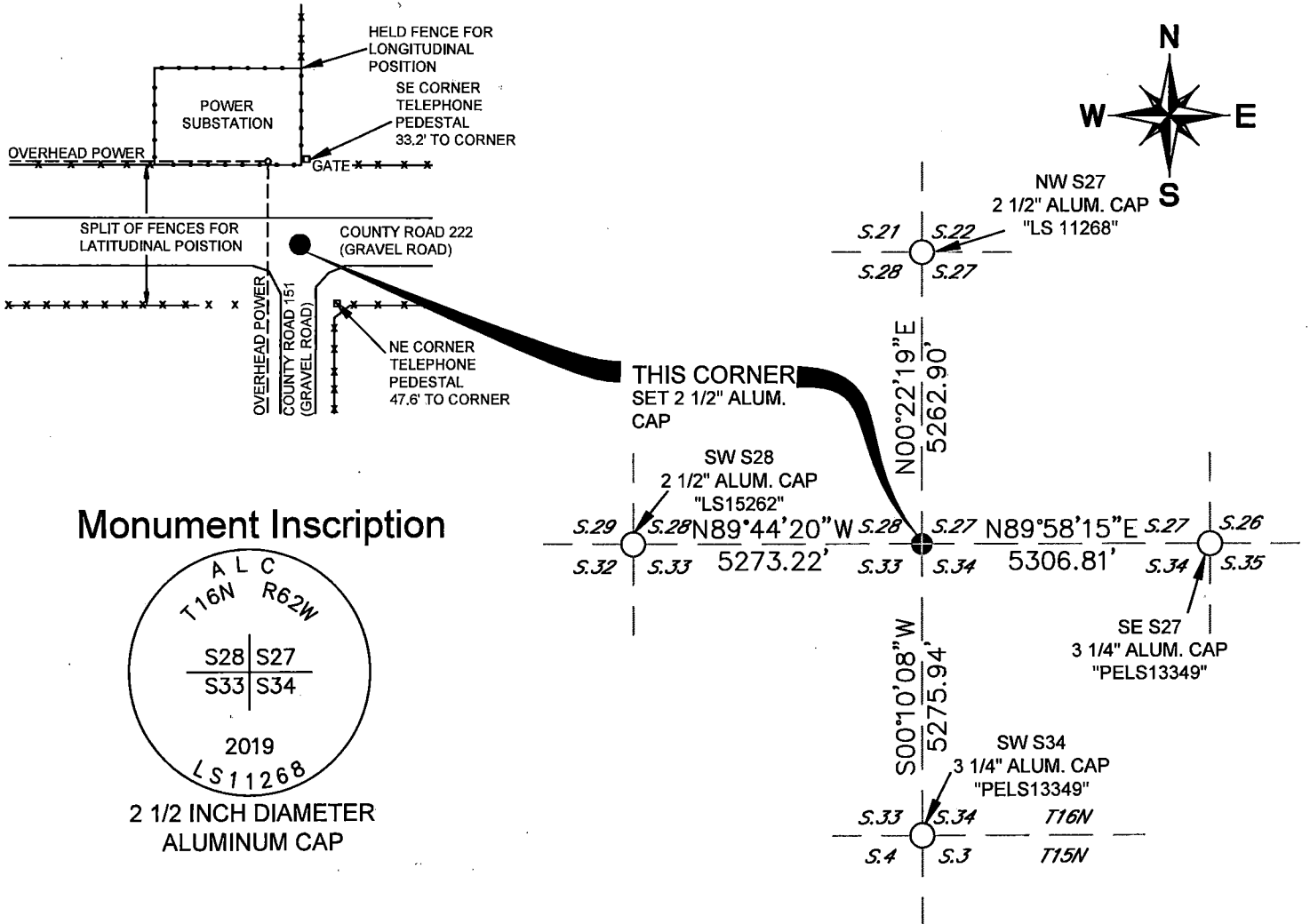
(In compliance with the **CORNER PERPETUATION AND FILING ACT**, Wyoming Statutes, 1997 Section 33-29-140 et. seq., and the Rules and Regulations of the Board of Professional Engineers and Professional Land Surveyors)

Record of original survey and citation of source of historical information (if corner is lost or obliterated). Description of corner monumentation evidence found and/or monument and accessories established to perpetuate the location of this corner. Sketch of relative location of monument, accessories, and reference points with course and distance to adjacent corner(s) (if determined in this survey).

Original Record: (J.W. Hammond - 1872) Set a sandstone 18 x 12 x 8 for corner to sections 27, 28, 33 & 34.

Evidence Found: No evidence of original corner. Used North-South fence (see below) as best evidence of longitudinal position and the split of County road Right-of-Way fences (see below) as best evidence of latitudinal position.

Perpetuation: At the established position, I set a 24" x 5/8" rebar with a 2 1/2" cap marked as shown below. Cap is set 5" below gravel surfaced road and is situated as shown below.



Cross Index Plat

1	2	3	4	5	6	7	8	9	10	11	12	13	14	15	16	17	18	19	20	21	22	23	24	25	
A																									
B																									
C	6	5	4	3	2	1																			
D																									
E																									
F																									
G	7	8	9	10	11	12																			
H																									
I																									
J	18	17	16	15	14	13																			
K																									
L																									
M																									
N																									
O																									
P	19	20	21	22	23	24																			
Q																									
R																									
S																									
T	30	29	28	27	26	25																			
U																									
V																									
W																									
X																									
Y	31	32	33	34	35	36																			
Z																									
	1	2	3	4	5	6	7	8	9	10	11	12	13	14	15	16	17	18	19	20	21	22	23	24	25



This corner record was prepared by me or under my direction and supervision.

BRIAN L. SCHMALZ
PLS 11268

PO BOX 502 | 135 PINE STREET
BUFFALO, WY 82834 | 307.684.1200



RECP #: 761634

RECORDED 9/16/2019 AT 2:10 PM BK# 2638 PG# 691
Debra K. Lee, CLERK OF LARAMIE COUNTY, WY PAGE 1 OF 1